



Rimini and San Marino International Airport

Barcelona – September 2017

Rimini & San Marino international airport: Federico Fellini



LAND SIDE

- 12 check-in desks + 2 additional desks in VIP lounge
- 20 front line positions (10 of them with back office)
- 7 Desks / Offices for passengers services (rental cars; hotel accommodation; etc)
- 2 Currency Exchange Desks
- 1 Restaurant / Coffee Bar
- 1 Bank / ATM
- 3 Baggage Wrapping Machines
- 500 car parks

TERMINAL: 15.600 m²

AIRSIDE

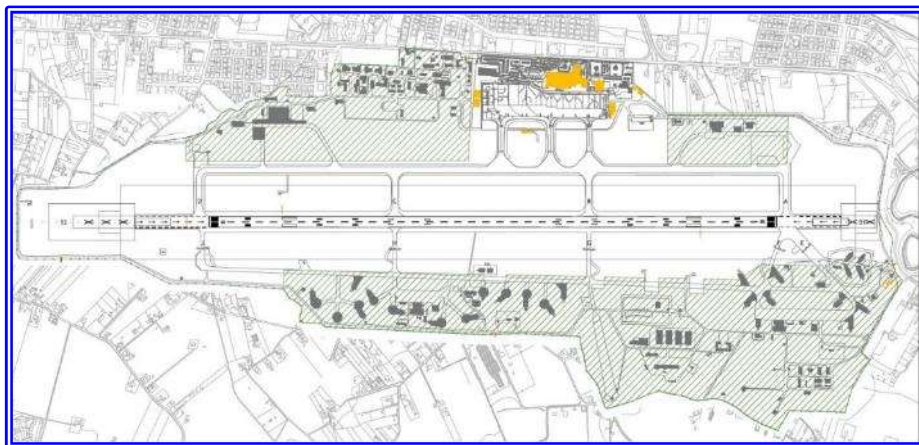
- Schengen area:
 - 3 gates
 - commercial area: 1 bar/restaurant + 1 shop with typical Italian specialties.
- Extra Schengen area:
 - 4 gates
 - commercial area (2.500 sm): 2 fashion stores + 2 bar/restaurants + 1 duty free + 1 typical specialties shop + 1 perfumery shop + 1 VIP lounge + 1 luxury and design shop
 - 1 panoramic roof-terrace (around 400 m²) equipped with a terrace café serving food & drinks

Additional two gates for boarding can be flexibly adapted (thanks to a swing mode overture) either for Schengen or non-Schengen flights, depending on actual needs

OTHER SERVICES

- Full Ground handling Services are provided by AIRhandling s.r.l. (100% owned by AIRimum 2014 S.p.A.)
- Catering service

Runway and apron



Rimini airport has a concrete / asphalt **runway of 2962 m x 45 m designed for Code E operations**. The runway has a Load Classification Number (LCN) of 100 and a Pavement Classification Number (PCN) of 73, which is sufficient for the operation of all Code E aircraft. The surface of the runway and of the main taxiways features a new asphalt overlay and is in good condition. The orientation of the runway at Rimini Airport is 126°/ 306° (RWY 13/ 31). According to the AIP, the declared distances for the 2 operating directions are as follows:

Runway Designator	TORA	TODA	ASDA	LDA
13	2962 m	3123 m	2962 m	2648 m
31	2962 m	3323 m	2962 m	2689 m

Landing direction 31 features a CAT I approach lighting system in CALVERT configuration with variable intensity. In direction 13 no approach lighting is installed.

The apron area is composed of 2 sections:

- Commercial aviation
- General/business aviation

Number of stands:

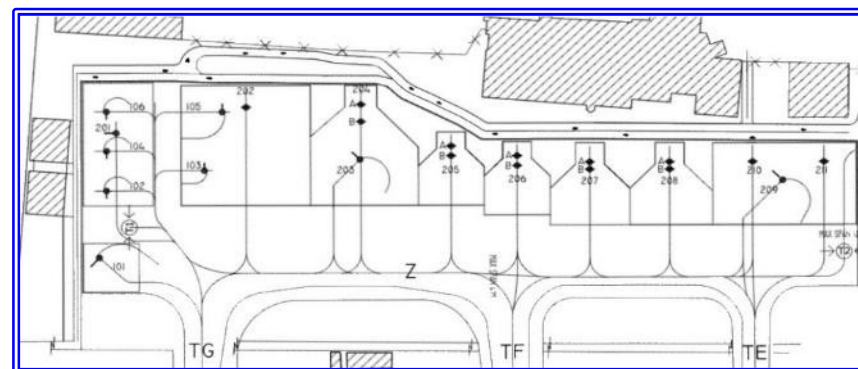
- 8 Stands, 2 of them for Wide Body AA/CC

All stands of the general -and business- aviation apron are taxi-in/taxi-out stands and all 8 commercial stands are taxi-in/push-back out.

GSE (Ground Service Equipment)

- GPU
- ASU
- De-icer available daily between 05:00 am and 11:00 pm.

The TWR (Air Traffic Control Tower) is operated by ENAV.



Passengers and economics: first 3 years

PAX

	2015	2016	2017 (E)
1) RUSSIA	113.572	167.009	226.363
CHARTER	79.293	99.557	109.837
REGULAR	34.279	67.452	116.526
2) ALBANIA	823	13.686	37.001
3) OTHER EXTRA EU COUNTRIES	5.485	10.214	11.163
A) EXTRA UE COUNTRIES	119.880	190.909	274.527
4) ITALY	772	1.356	2.408
5) GERMANY	13.425	13.419	0
AIR BERLIN	13.425	13.419	0
6) OTHER UE COUNTRIES	22.981	31.213	32.297
B) UE COUNTRIES	37.178	45.988	34.705
TOTAL	157.058	236.897	309.232
annual change		+50,8%	+30,5%

In 2011 Rimini Airport recorded about 1 million passengers.

ENAC estimates the potential catchment area of Rimini as 1.7 million passengers (from 2003 to 2012, the average of the two passenger volumes of Rimini and Forlì combined was about 1.2 million passengers).

As of now those missing passengers have moved to Bologna Airport.

EUR

REVENUES	3.396.339	5.071.959	9.000.000
		+49,3%	+77,5%
EBITDA	643.380	1.420.000	3.200.000
		+120,7%	+125,4%
NET PROFIT	429.000	1.228.000	1.900.000
		+186,3%	+54,7%
BANK DEBT	0	0	0

Rimini airport traffic (2016 & 2017)

Top 15 Countries Point - to - point

COUNTRY	2016	2017 (E)
RUSSIA	167.009	226.363
ALBANIA	13.686	37.001
GERMANY	13.419	0
LUXEMBOURG	8.319	6.794
FINLAND	5.742	5.682
UKRAINE	4.908	5.738
SPAIN	4.419	4.123
BELGIUM	3.896	0
BELARUS	3.683	1.789
LATVIA	3.187	4.159
ESTONIA	1.924	1.696
NETHERLAND	1.414	0
ITALY	1.356	2.408
GREECE	1.327	2.029
SWITZERLAND	1.317	0
OTHERS	1.291	11.450
TOTAL	236.897	309.232

Seasonality

MONTH	2016	2017
JAN	4.642	9.168
FEB	2.771	7.336
MAR	4.375	11.488
APR	10.499	18.140
MAY	17.064	22.194
JUN	34.728	41.061
JUL	48.370	55.205
AUG	42.900	46.669
SEP	37.392	50.163
OCT	16.816	21.636
NOV	8.772	11.430
DEC	8.568	14.742
TOTAL	236.897	309.232

Russia (73% traffic)

REGULAR FLIGHTS

▪ Moscow (yearly)





▪ Saint Petersburg (summer season)





CHARTER FLIGHTS

Albania (12% traffic)

▪ Tirana (yearly)




REGULAR FLIGHTS

Strategies starting from 2018 for new markets



Romagna potentiality in terms of passengers



In 2016 Emilia Romagna welcomed about 9 million visitors, who generated about 48 million overnight stays: about 82% of them in Romagna.

Romagna - with a **coast of about 110 km** and 1,5 million inhabitants - is the Italian capital of tourism and probably one of the most important European tourist platforms with about:

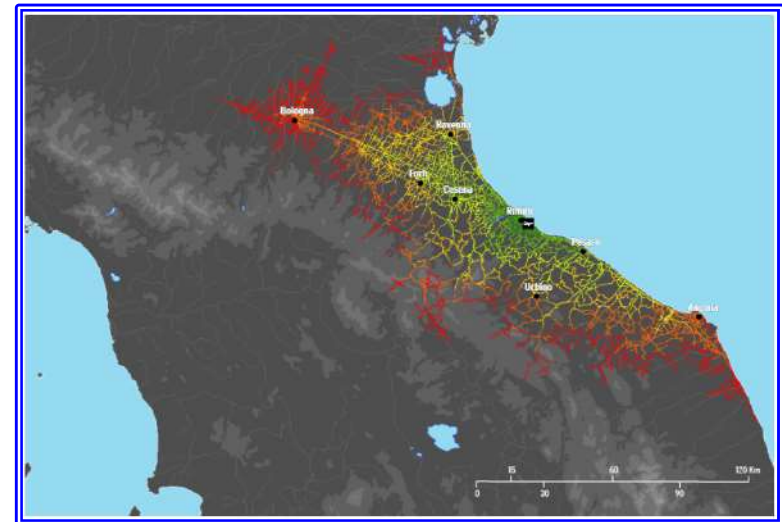
- 6.000 hotels
- 300.000 beds in private houses
- 90.000 camping facilities and resorts
- 1.600 bathing facilities
- about **1 million beds** and about **8.000 employees**

The GDP generated by Riviera Romagnola Tourism Industry in 2016 was about 10 billions EUR
(Source: Nomisma).

The citizens of the area (**3.600.000 estimated by Istat in 2012**) could reach the airport just in 1 hour and a half via road network. In particular:

- 650.000 (18%) in the first time range (0-30 min)
- 1.150.000 (32%) in the second time range (30-60 min)
- 1.800.000 (50%) in the third time range (60-90 min)

The proximity to Ravenna area allows potential commercial synergies with the port activities (cruise traffic).



Nearby Airports



Bologna Airport, Marconi



Bologna Airport, the Emilia Romagna's regional hub, is about 120 km far from Rimini and it does not dispose of any efficient rail and motorway link with Romagna Riviera. In 2017 it achieves almost 8 million passengers (about 50% with Ryanair)

Ancona Airport, Sanzio



Ancona Airport is the only airport within Marche region. It lies almost 100 km far from Rimini.

Arrivals and overnights in Emilia Romagna

Top 15 Countries for tourists' Arrivals in Emilia Romagna

COUNTRY	2015	2016	DIFF %
GERMANY	423.586	449.282	+6,1%
FRANCE	228.885	240.300	+5,0%
CHINA	284.648	230.048	-19,2%
SWITZER. AND LIECHTENS.	187.751	197.971	+5,4%
RUSSIA	127.312	141.034	+10,8%
UNITED KINGDOM	118.963	132.476	+11,4%
POLAND	100.637	107.702	+7,0%
NETHERLANDS	97.220	104.910	+7,9%
UNITED STATES	93.926	99.360	+5,8%
SPAIN	84.081	98.833	+17,5%
BELGIUM	78.493	86.522	+10,2%
AUSTRIA	77.228	82.350	+6,6%
ROMANIA	49.599	62.202	+25,4%
CZECH REPUBLIC	44.408	45.495	+2,4%
HUNGARY	35.455	39.058	+10,2%
TOTAL	2.032.192	2.117.543	+4,2%

Top 15 Countries for tourists' Overnight stays in Emilia Romagna

COUNTRY	2015	2016	DIFF %
GERMANY	2.197.065	2.200.099	+0,1%
SWITZER. AND LIECHTENS.	864.630	893.812	+3,4%
FRANCE	886.092	882.840	-0,4%
RUSSIA	554.655	617.411	+11,3%
NETHERLANDS	440.081	456.210	+3,7%
POLAND	412.227	436.954	+6,0%
UNITED KINGDOM	326.383	369.949	+13,3%
BELGIUM	306.512	336.906	+9,9%
AUSTRIA	303.745	302.330	-0,5%
CHINA	334.086	291.488	-12,7%
ROMANIA	252.533	283.128	+12,1%
UNITED STATES	232.022	253.480	+9,2%
SPAIN	197.426	244.456	+23,8%
CZECH REPUBLIC	245.459	229.561	-6,5%
HUNGARY	152.741	150.842	-1,2%
TOTAL	7.705.657	7.949.466	+3,16%

Source: Regione Emilia-Romagna – Servizio statistica (<http://statistica.regione.emilia-romagna.it>)

Communities living in Emilia Romagna and Marche

Top 10 ethnic communities living in Emilia Romagna and Marche

COUNTRY	Emilia Romagna	Marche	TOT
ROMANIA	88.034	25.976	114.010
ALBANIA	58.167	16.760	74.927
UKRAINE	32.273	5.625	37.898
MOLDOVA	29.538	4.266	33.804
POLAND	11.277	4.389	15.666
MACEDONIA	8.203	7.452	15.655
BULGARIA	5.651	1.325	6.976
RUSSIA	4.105	1.475	5.580
SERBIA	3.249	457	3.706
KOSOVO	2.391	1.045	3.436
TOTAL	242.888	68.770	311.658

Source: ISTAT (<http://dati.istat.it>)

Additional important attraction sources



Rimini Exhibition Centre (joined with Vicenza Fiera) registers about 2 millions of visitors each year and The Rimini Convention Centre (the biggest Italian one)



International brands on motor sector



San Marino Republic registers about 2 millions of visitors per year with its relations with 107 Countries



*Main European district of entertainment parks
(15 parks with different thematics)*

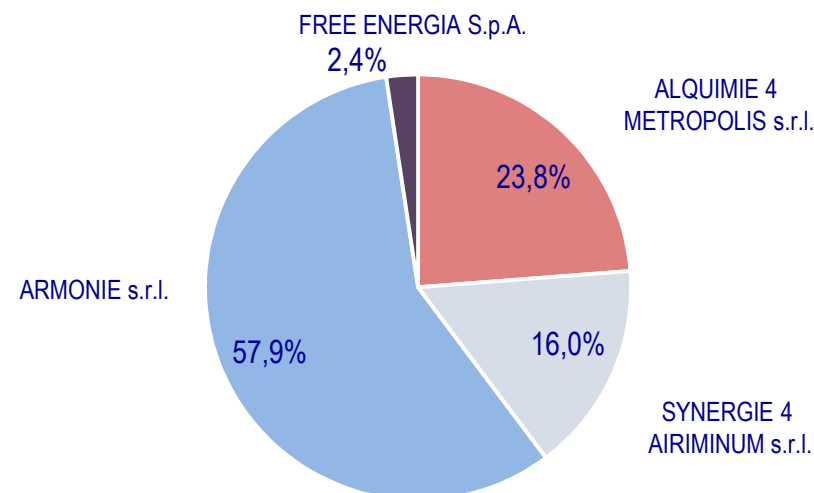


Cities of Art

AIRIMINUM 2014 S.p.A.: the new management company

AIRiminum 2014 S.p.A. is the new 100% privately run company, which manages Rimini and San Marino International Airport 'Federico Fellini'. The concession granted by the Italian Civil Aviation Authority (ENAC) has a duration of 30 years (EASA certification underway). By October 2017, the Master Plan outlining the development of the airport over the next 30 years will be completed as a joint effort with Fraport AG, the Frankfurt Airport management company.

Laura Fincato	President	Member of the board of SAVE (management company of Venice Airport) four times Member of Italian Parliament three times Vice Minister of Italian government: last time of Ministry of Foreign Affairs (in charge of relationship with China)
Lucio Laureti	Vice President	President of board of SAGA (management company of Pescara Airport) University Professor in Economy
Leonardo Corbucci	CEO	Partner in listed merchant bank, with previous experience in international consulting (Ernst&Young, KPMG) and International banking (BNL – BNP Paribas)
Roberto Montesi	member of board	Partner on Italian Consulting Company with focus on infrastructure and banking. Director of Federazione Italia Gioco Calcio (FIGC)
Simone Badioli	member of board	Important local entrepreneur. He's the CEO of Alberta Ferretti S.p.A. (Fashion) and Alberta Ferretti's son. The group owns other important fashion brands (Moschino, Pollini, etc.)



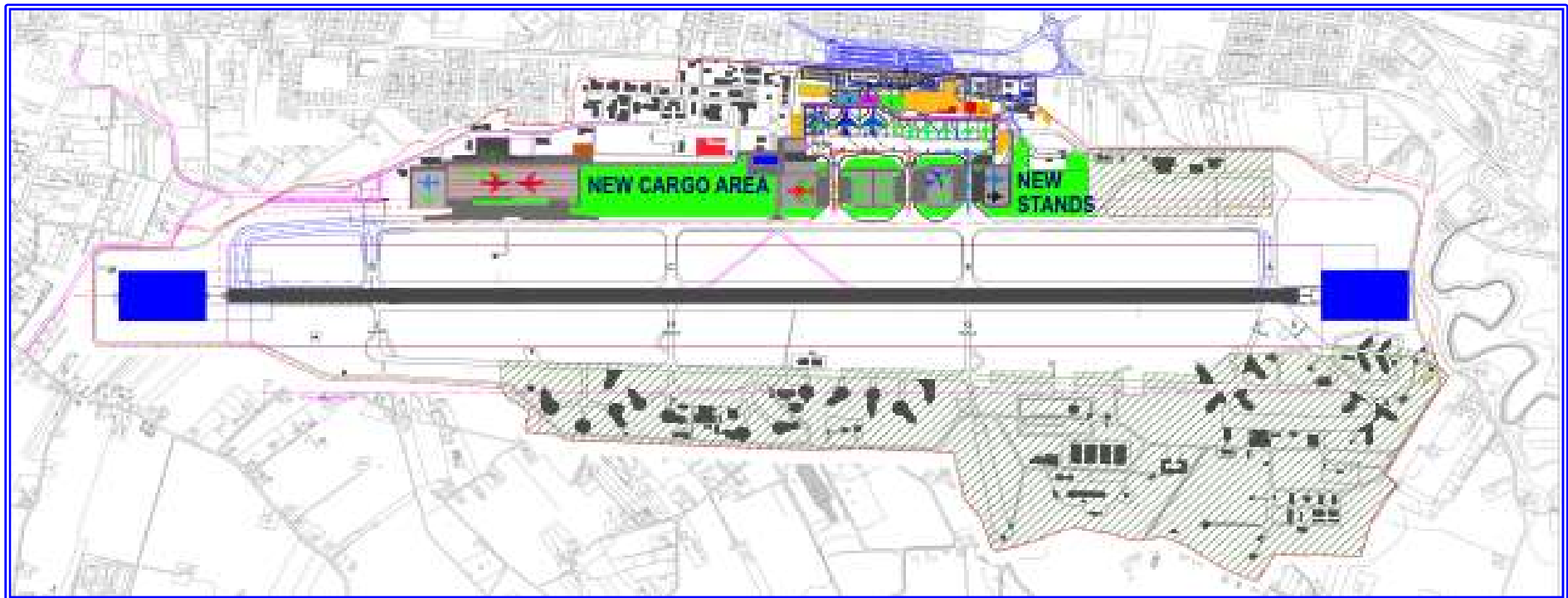
AIRiminum 2014 started operating on April 1st 2015, reopening the airport from scratch, following its closure due to the failure of the previous, completely publicly owned, management company.

The substantial and primary objective of this first phase was to demonstrate that a totally private management company, without any kind of public funding from the central government or local authorities, would be able by its very own forces and means to reopen the Airport's commercial activity while reaching sound operating results.

The future development of the airport: Master plan

II The Master Plan (2018 – 2033) will touch on the following work to be carried out in the coming years. To sum up broadly:

- Terminal extension for the Schengen Area
- Increase in the number of stands
- Development of a new logistics platform for cargo in the aerodrome



Internal areas



desk check-in 1



VIP lounge



extra Schengen gate area



desk check-in 2



tour operator desks



currency exchange point

Airside shops



perfumery



wine shop



fashion store 1



design store



fashion store 2



typical Italian specialties

Food & beverage facilities



AlRimum 2014 contacts

❑ **Leonardo Corbucci**
CEO
leonardo.corbucci@riminiairport.com

❑ **Silvia Della Rosa**
CEO'S ASSISTANT
+39 3455835718
silvia.dellarosa@riminiairport.com

❑ **Maurizio Cecilia**
COMMERCIAL DIRECTOR
+39 3281683270
maurizio.cecilia@riminiairport.com

